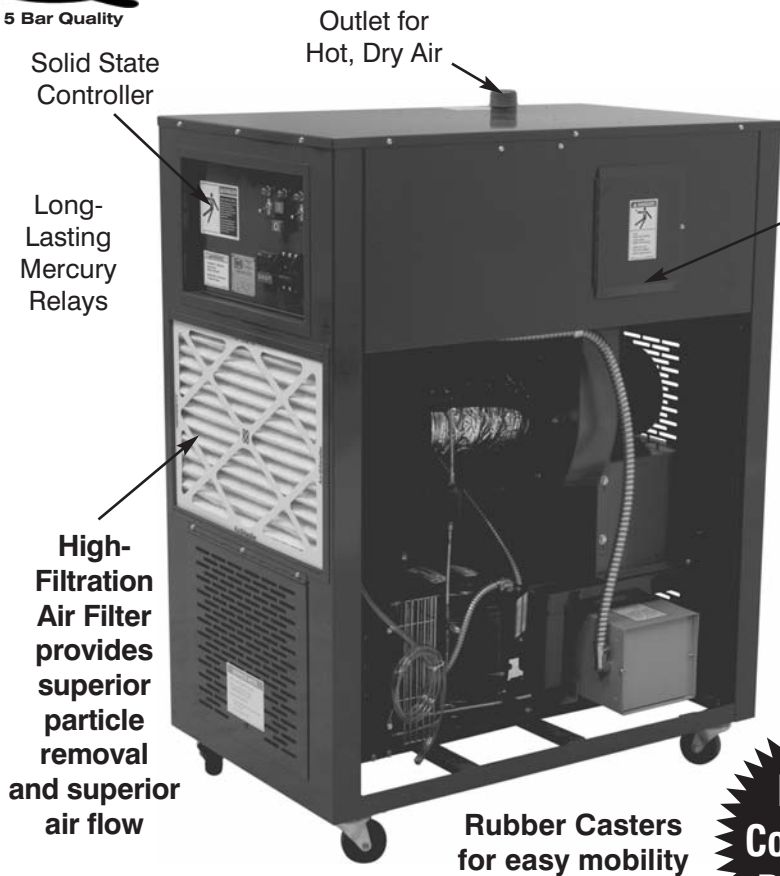




IMS
Select

Refrigerant Type Hopper Dryer

HIGH CAPACITY! 5780 BTU/hr



Solid State Controller

Outlet for Hot, Dry Air

Long-Lasting Mercury Relays

High-Filtration Air Filter provides superior particle removal and superior air flow

Rubber Casters for easy mobility

Easy access to Heating Elements

Hinged Electronic Panel for quick access

Fresh Air Intake

Hinged Access Door for easy cleaning of Compressor Coil

Machine open for illustration only.

Precise, Consistently Dry Output

PRECISE, CONSISTENTLY DRY OUTPUT

- Heating Chamber has 4" thick, mineral wool insulation
- Panel Lights indicate all functions
- Heavy duty, Commercial Refrigeration — built for continuous service
- Dehumidifier Automatic Thermostat is user-settable to achieve optimum 34° F coil temperature
- Recessed Controls prevent component damage
- Pressurized Hot-Air Chamber for long element life
- Protective Interlock (Blower must be "ON" to start heater and compressor)
- Quiet, Long-Life Mercury Relays on Heater and Compressor
- Overheat Safety Switch shuts heaters off on runaway heats over 450° F
- Easy-to-remove panels for quick access to components
- Rugged, Portable Cabinet
- Permanent Lubrication
- High Efficiency Paper Filter gives improved protection on entire system (removable from either side)

3/8" Copper, Water Drain Tube
20" from floor (not shown)

Tapered duct behind evaporation coil uses full coil-surface area



Silicone-Sealed Air Passage prevents air from bypassing filter and cooling coil



Never run your dryer without filters or with dirty filters.

IMS
Industrial Molding Supplies

www.imscompany.com

phone order toll-free (USA & Canada)

1.800.537.5375

fax order toll-free (USA & Canada)

phone order toll-free (Mexico)

tech support toll-free (USA & Canada)

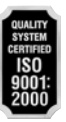
e-mail

1.888.288.6900

001.888.304.1307

1.866.467.9001

sales@imscompany.com





Refrigerant Type Hopper Dryer



Model MD750

Perfect for drying Nylon, Polycarbonate, ABS, SAN etc.

THE WORK HORSE OF THE INDUSTRY WITH 2 YEAR WARRANTY!

High-Output Blower ensures EVEN Temperatures THROUGHOUT your hopper!



Precise, Consistently Dry Output

MEASUREMENTS

Replaceable Air Filter: 14" x 20" x 1"
Drain Connection: 3/8" Copper Tubing, 20" from floor
Dimensions: 51" high x 22" wide x 36" deep
Crated Weight: 230 V: 340 lbs, 460 V: 380 lbs

SPECIFICATIONS

Temperature Range: Ambient air to 400° F
Insulation: 4" thick mineral wool around heating chamber
Output Air Connection: 1 1/2" N.P.T. — takes standard 1 7/8" ID hose
Capacity: **Up to 300 lbs/hr**, depending material and moisture content

MAIN ELECTRICS

Heating Element: Open nichrome coil, 7.5 kW duct type
Blower: 810 cfm @ 1" static pressure. 1 hp, 3450 rpm motor with overload protection
Control Circuit: 115V, fused 1 amp Quiet, Long-Life Mercury Relay
Temperature Controller: 50° to 400° F, Accurate to ±2° F
Separate, high-heat limit set at 450° F: Automatic Reset
Heater Fuses: 230 V Three, 30 amps
460 V: Three, 10 amps
Main Circuit Breaker: 230 V 40 amps
460 V 25 amps
Indicator: Function indicator lights on control panel.

REFRIGERATION UNIT

Compressor: 1/2 hp, 230/60/1 protected by 15-amp fuse
Rating: .. 5,780 btu/hr at 30° suction temperature with separate condenser.
Running Amps: 6



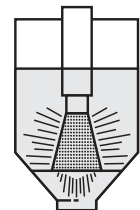
A dryer's vent is just like your dryer's vent at home. Hot, moist air is exhausted into the air. If possible always vent your material dryers to the outside.

NO Up-Charges



Includes High Efficiency Dispersion Cone

Increases air dispersion to the CRITICAL areas of your hopper



NOTE: Adjustable, High-Efficiency Dispersion Cone also available to order — See page 692

— Also Includes Condenser Cleaning Brush —

Refrigerant Type Hopper Dryer

Complete with 2" dial thermometer, 12' of #108653 Silicone Hose, 2 #108195 Hose Clamps and 1 #108251 Hot-Air Dispersion Cone for placement in your hopper.

SPECIFY VOLTAGE

#119920 (230/60/3) **\$3,900.00**
#119916 (460/60/3) **3,949.95**

SPARE PARTS

#134447 Accessory Kit
Complete with 12' of #108653 Silicone Hose, 2 #108195 Hose Clamps and 1 #108251 Hot-Air Dispersion Cone (Does NOT include 2" dial thermometer) **\$94.90**
#108501 Condenser Cleaning Brush **3.50**

For Dryer Hose and Insulation see pages 578-580



www.imscompany.com | phone order toll-free (USA & Canada) **1.800.537.5375**

fax order toll-free (USA & Canada) | phone order toll-free (Mexico) | tech support toll-free (USA & Canada) | e-mail
1.888.288.6900 | **001.888.304.1307** | **1.866.467.9001** | **sales@imscompany.com**

